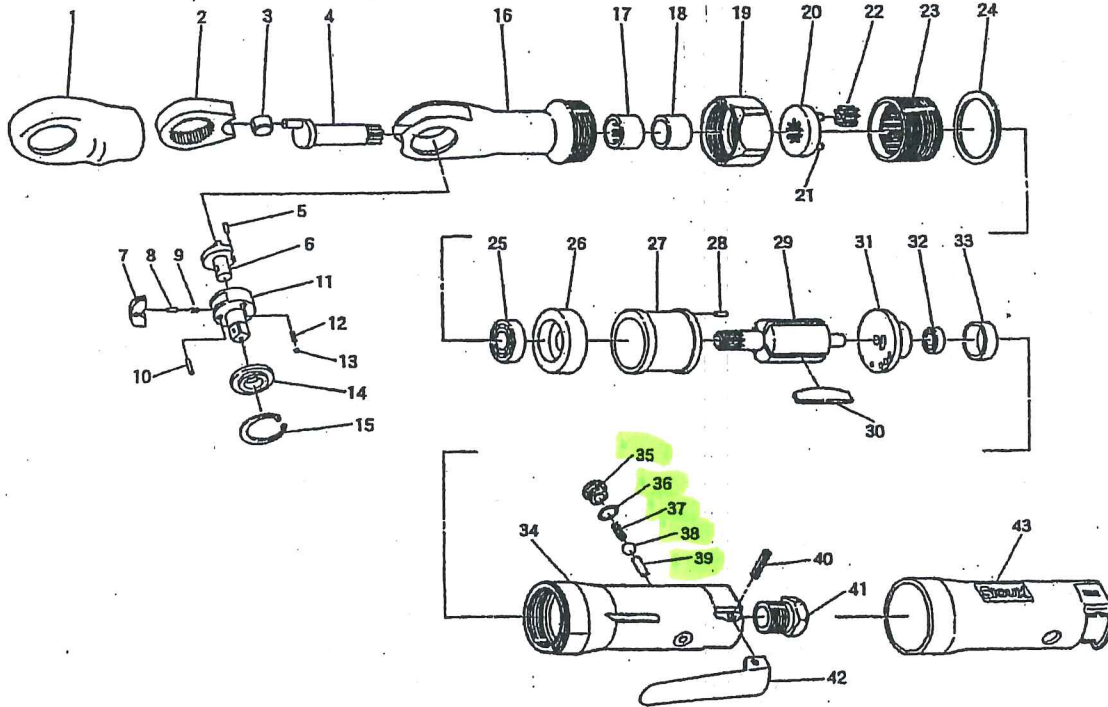


4689 1939



5011 3/8" Sq. Drive Ratchet Wrench
 5013 1/2" Sq. Drive Ratchet Wrench



| Ref. No. | Part No. | Description |
|----------|----------|-------------------------------|
| 1 | 505703 | Boot (Black) |
| 2 | 66528 | Yoke |
| 3 | 66527 | Drive Bushing |
| 4 | 66526 | Crankshaft |
| 5 | 66530 | Roll Pin |
| 6 | 66529 | Reverse Lever for 3/8" |
| | 66494 | Reverse Lever for 1/2" |
| 7 | 66493 | Ratchet Pawl |
| 8 | 66533 | Reverse Pin |
| 9 | 66532 | Reverse Spring |
| 10 | 66525 | Dowel Pin |
| 11 | 66522 | Anvil for 3/8" |
| | 66514 | Anvil for 1/2" |
| 12 | 66531 | Thrust Washer Spring (2)* |
| 13 | 66498 | Steel Ball (2)* |
| 14 | 66578 | Thrust Washer for 3/8" |
| | 66497 | Thrust Washer for 1/2" |
| 15 | 66579 | Retaining Ring |
| 16 | 505704 | Ratchet Housing |
| 17 | 66523 | Needle Bearing |
| 18 | 66519 | Bushing |
| 19 | 66512 | Clamp Nut |
| 20 | 66516 | Planet Cage incl. Planet Pins |
| 21 | 506272 | Planet Pins (3)* |
| 22 | 66517 | Planet Gear (3)* |

| Ref. No. | Part No. | Description |
|-----------|----------|---------------------------------|
| 23 | 66515 | Internal Gear |
| 24 | 66513 | Lock Washer |
| 25 | 67472 | Ball Bearing |
| 26 | 66510 | Front Plate |
| 27 | 66509 | Cylinder |
| 28 | 66538 | Roll Pin |
| 29 | 66506 | Rotor |
| 30 | 66507 | Rotor Blade (Set of 4) |
| 31 | 66505 | Rear Plate |
| 32 | 66504 | Ball Bearing |
| 33 | 66501 | Bearing Cap |
| 34 | 505705 | Motor Housing including Bushing |
| 35 | 66547 | Valve Screw |
| 36 | 66546 | O-Ring |
| 37 | 66545 | Valve Spring |
| 38 | 66499 | Valve |
| 39 | 66500 | Valve Pin |
| 40 | 66540 | Lever Pin |
| 41 | 67036 | Inlet Bushing with Screen |
| 42 | 67034 | Throttle Lever |
| 43 | 505706 | Housing Cover |
| Not shown | 505707 | Name Plate (5011) |
| Not shown | 505708 | Name Plate (5013) |
| Not shown | 67255 | Name Plate Screw (2)* |
| Not shown | 67411 | Warning Label |

* Order Quantity As Needed