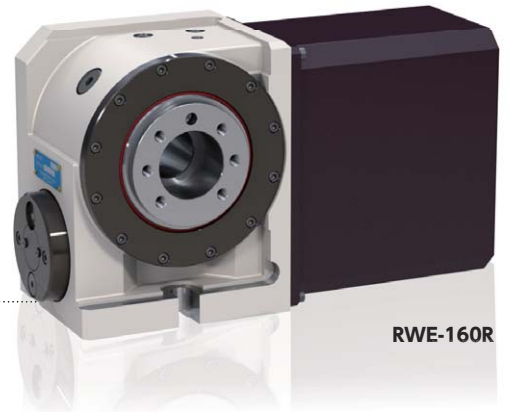


Standard type

# RWE/RWA

**RWE-160•200**  
**RWA-160•200•250•320**

# RN RN-100



RWE-160R

The RWE/RWA series, an improvement on the best-selling, has remarkably improved cost efficiency due to its high-speed operation for use in drill and tapping machines.

## Specifications

Unit: mm

		RWE/RWA-160	RWE/RWA-200	RWA-250	RWA-320	RN-100	
Handedness	R	○	○	○	○	○	
	L	○	○	○	○	○	
Spindle diameter		φ 100	φ 120	φ 140	φ 180	φ 80	
Table diameter*1		φ 160 or 200 (Option)	φ 200 or 250 (Option)	φ 250 (Option)	φ 320 (Option)	φ 135 (Option)	
Center height		135	160	160	210	110	
Center bore	Nose diameter	φ 55H7×45	φ 65H7×45	φ 80H7×45	φ 115H7×45	φ 50H7×45	
	Through-bore	φ 40	φ 45	φ 50	φ 85	φ 30	
Table T-slot width*1		12H8	12H8	12H8	14H8	10H8	
Guide block width		14h7	18h7	18h7	18h7	14h7	
Servo motors (for FANUC)		αiS2	αiS4	αiS8	αiS8	αiF2	
Inertia converted into motor shaft	× 10 <sup>-3</sup> kg·m <sup>2</sup>	0.09	0.17	0.41	0.52	0.23	
Net weight	kg	40	61	80	150	28	
Speed reduction ratio		1/72	1/72	1/90 *2	1/120 *2	1/36	
Table max. rpm	min <sup>-1</sup> (Motor rpm: 3,000min <sup>-1</sup> )	41.6	41.6	33.3	25	83.3	
Indexing accuracy (the sum)		25	20	20	20	45	
Repeatability	arc sec	4	4	4	4	4	
Clamp system		Pneumatic	Pneumatic	Pneumatic	Pneumatic	Pneumatic	
Clamp torque /pneumatic pressure 0.49MPa	N·m	250 (RWE)	400 (RWE)	1,000	1,500	80	
		500 (RWA)	800 (RWA)				
Strength of worm gears	N·m	206	288	596	939	176	
Allowable work weight	Vertical setting ( : with tailstock)	kg	100 (200)	125 (250)	175 (350)	25 (50)	
	Horizontal setting	kg	200	250	250	350	50
Allowable load (when table is clamped)	F	N	10,800	14,400	14,400	24,800	5,880
	F×L	N·m	500	800	1,000	1,500	80
	F×L	N·m	780	1,900	1,900	4,700	156
Allowable work inertia	$J = \frac{W \cdot D^2}{8}$	kg·m <sup>2</sup>	0.64	1.25	1.95	4.48	0.10

☞ Servo motors of other manufacturers **P.72**

☞ When assembling a faceplate or a fixture with the main spindle (RNA-B-series) **P.82**

\* 1 The tolerance of the table T-slot width is applicable to four standard slots arranged crosswise. ☞ Dimensions **P.66**

\* 2 High speed models are available. Ask us for further information.

RWA-250,320(speed reduction ratio: 1/45) RWA-320: αiS12 or an equivalent motor should be used.