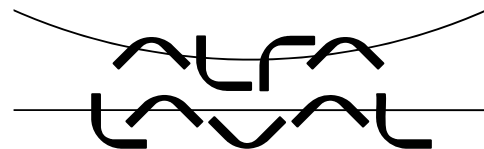


Brazed Plate Heat Exchanger



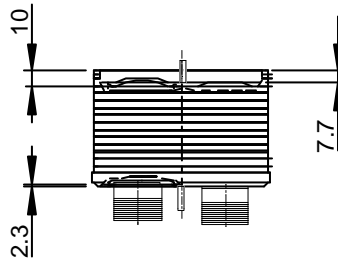
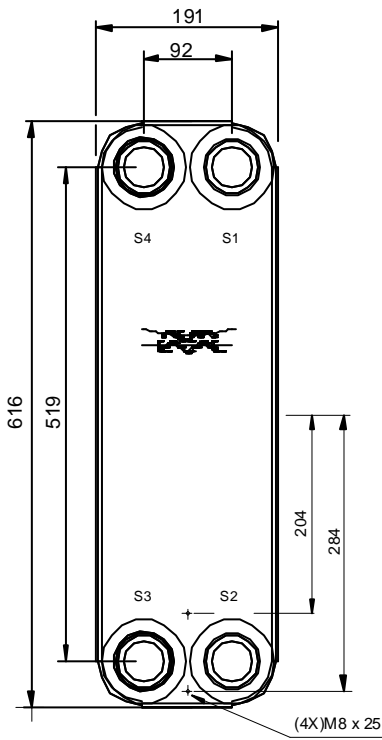
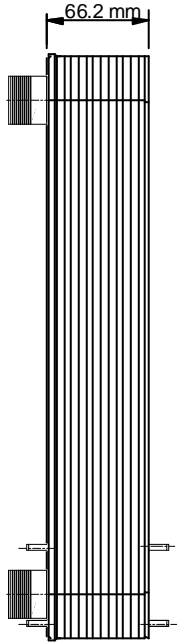
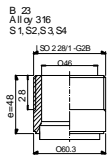
Technical specification

Model : CB110-20L (32871 0159 9)
 Project : (Untitled 0) Units : 1
 ItemName : Date : 12/01/2018

		Hot side	Cold side
		S4S3	S2S1
Fluid		Steam	Water
Density	kg/m ³	0.7840	979.1
Specific heat capacity	kJ/(kg*K)	2.08	4.18
Thermal conductivity	W/(m*K)	0.0244	0.658
Viscosity inlet	cP	0.0125	1.14
Viscosity outlet	cP	0.0124	0.314
Mass flow rate	kg/h	400.0	2843
Inlet temperature	°C	110.0	15.0
Outlet temperature	°C	106.7	90.0
Pressure drop	kPa	15.3	1.67
Heat Exchanged	kW	247.6	
L.M.T.D.	K	48.1	
O.H.T.C clean conditions	W/(m ² *K)	3788	
O.H.T.C service	W/(m ² *K)	2560	
Heat transfer area	m ²	2.02	
Fouling resistance*10000	m ² *K/W	0.000	
Duty margin	%	48.0	
Relative directions of fluids		Countercurrent	
Number of passes		1	1
Materialplate/ brazing		Alloy 316 / Cu	
ConnectionS1 (Cold-Out)		Threaded (External)/ 2" ISO 228/1-G (B23) Alloy	
316			
ConnectionS2 (Cold-In)		Threaded (External)/ 2" ISO 228/1-G (B23) Alloy	
316			
ConnectionS3 (Hot-Out)		Threaded (External)/ 2" ISO 228/1-G (B23) Alloy	
316			
ConnectionS4 (Hot-In)		Threaded (External)/ 2" ISO 228/1-G (B23) Alloy	
316			
Pressure vessel code		PED	
Design pressure at 90.000000 Celsius	Bar	30.0	30.0
Design pressure at 225.000000 Celsius	Bar	25.0	25.0
Design temperature	°C	-196.0/225.0	
Overall length x width x height	mm	139 x 191 x 616	
Net weight, empty / operating	kg	20.9 / 23.0	
Package length x width x height	mm	270 x 780 x 270	
Package weight	kg	7.500	
Price RCPL incl Extras		1670 EUR	
-Unit 32871 0159 9		1670.00 EUR	

Performance is conditioned on the accuracy of customers data and customers ability to supply equipment

Note that all unique customer requirements (if any) need to be verified by Alfa Laval.



HEATING SURFACE 2.016 m²
 NET WEIGHT 20.95 kg
 OPERATING WEIGHT 23.02 kg

PLATE MATERIAL Alloy 316
 PLATE GROUPING 1*9L / 1*10L


TOTAL LENGTH 39.2
 TOTAL WIDTH 91.0
 TOTAL HEIGHT 216.0

ALL DIMENSIONS IN MILLIMETRES

MEDIA	INLET	TEMP.	OUTLET	TEMP.	FLOW RATE	PRESSURE DROP	LIQUID VOL.
Steam	S4	110.0 °C	S3	106.7 °C	0.1111 kg/s	15.25 kPa	1.890 dm ³
Water	S2	15.0 °C	S1	90.0 °C	0.7897 kg/s	1.671 kPa	2.100 dm ³

SUPPLIER	REF.	IMP. NO.
AGENT / REF.		
CUSTOMER NAME / REF. NO.		
SIGN.		

PLATE HEAT EXCHANGER
CB110-20L
 PED



ITEM ID.
32871 0159 9
 DATE
2018-01-12
 REV
No. 0