

- Male M12
- straight

**General attributes**

Enclosure Type per IEC 60529	IP68
Function indicator (PIN 2)	No
Function indicator (PIN 4)	No

**Electrical attributes**

Bus system	Profibus
Operating voltage UB max. AC [V]	24.0 V
Rated current (40°C)	4.0 A

**Mechanical attributes**

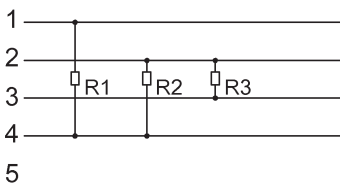
Ambient temperature Ta max.	80 °C
Ambient temperature Ta min.	-20 °C
Connector configuration	straight

**Connector type**

Connector type (Header I)	M12x1
Contact material	Male M12
Cover nut material	CUZn
Drag chain compatible	GD-Zn
Grip material	Yes
Number of female/male pins	PUR
System	5
Tightening torque pigtail	molded
	0.6 Nm

**Additional text**

Enclosure type accord. to IEC 60529, when threaded together with the appropriate counterpart.



R1=390Ω  
R2=220Ω  
R3=390Ω

